

DATE: May 12, 2026
PROJECT No. 3993.05
PROJECT NAME: 2026 Resurfacing Program
Page 1

Civil Addendum

1. This Addendum shall be read in conjunction with and considered as an integral part of the Contract Documents; revisions supercede the information contained in the original drawings, specifications or previously issued Addendum.
2. Tender Price submitted shall include all items of this Addendum.
3. No consideration will be allowed for any extras due to any bidder not being familiar with the contents of this Addendum.

1.0 Document Revisions:

- 1.1* Replace the Schedule of Quantities with the attached revised Schedule of Quantities.
- 1.2* Add the attached Supplemental Specifications to address the pay item 32 11 23, 1.4.5, "Gravel Shoulder"
- 1.3* Replace the Figures with the attached for coordinated cross referencing of the revised Schedule of Quantities.

SCHEDULE OF QUANTITIES AND PRICES
(See paragraph 5.3.1 of the Instructions to
Tenderers - Part II)

(All prices and *Quotations* including the *Contract Price* shall include all *Taxes*, but shall not include *GST*.)

Any work called for in the Contract Documents, shown on the plans, or which is necessary for the completion of the Work called for in the Contract Documents, and which is not specifically listed as a separate payment item in this Appendix, shall be deemed incidental to the performance of the Work and to the general purpose of the Contract; no separate payment will be made on account of any such Work, but the costs of any such incidental Work shall be included in the Unit and Lump Sum Prices.

Summary Sheet

Project Areas	Title	Amount
01	Tiswilde Road	
02	Sundance Drive and Pears Road	
03	Glen Forest Way	
04	Rocky Glen Road	

TOTAL TENDER PRICE	
GST (5%)	
TENDER PRICE (w/ GST)	

PROJECT AREA

TISWILDE ROAD

DIV 01 GENERAL REQUIREMENTS						
MMCD Section	Para	Specification Title	Unit	Quantity	Unit Price	Amount
01 55 00		Traffic Control, Vehicle Access and Parking				
	1.5.1	Traffic Control, Vehicle Access and Parking	Incidental	-	-	-
01 57 01		Environmental Protection				
	1.6.1	Environmental Protection	Incidental	-	-	-
DIV 32 ROADS AND SITE IMPROVMENTS						
MMCD Section	Para	Specification Title	Unit	Quantity	Unit Price	Amount
32 01 11		Pavement Surface Cleaning and Remove Pavement Marking				
	1.2	Pavement Cleaning	Incidental	-	-	-
32 01 16.7		Cold Milling				
	1.5.1	Cold Milling to maximum 50mm thickness, including disposal	Square Metre	270		
32 11 23		Granular Base				
	1.4.5	Gravel Shoulder	Tonne	50		
32 12 13.1		Asphalt Tack Coat				
	1.5.1	Asphalt Tack Coat	Square Metre	2876		
32 12 16		Hot-Mix Asphalt Concrete Paving				
	1.5.1, 1.5.2	Asphalt Pavement Overlay - Upper Course # 2 - Local Road - Minimum 50mm Thick	Tonne	390		
	1.5.3	Asphalt Driveway on Gravel 50 mm thickness - Upper Course #2	Square Metre	60		
	1.5.3	Base Asphalt Pave on Gravel	Square Metre	15		
	1.5.3	Asphalt Driveway Overlay 50 mm thickness - Upper Course #2	Square Metre	150		
TISWILDE ROAD TOTAL (transfer to Summary Sheet)						

PROJECT AREA SUNDANCE DRIVE AND PEARS ROAD

DIV 01		GENERAL REQUIREMENTS				
MMCD Section	Para	Specification Title	Unit	Quantity	Unit Price	Amount
01 55 00		Traffic Control, Vehicle Access and Parking				
	1.5.1	Traffic Control, Vehicle Access and Parking	Incidental	-	-	-
01 57 01		Environmental Protection				
	1.6.1	Environmental Protection	Incidental	-	-	-
DIV 32		ROADS AND SITE IMPROVMENTS				
MMCD Section	Para	Specification Title	Unit	Quantity	Unit Price	Amount
32 01 11		Pavement Surface Cleaning and Remove Pavement Marking				
	1.2.1	Pavement Cleaning	Incidental	-	-	-
32 01 16.7		Cold Milling				
	1.5.1	Cold Milling - Taper Grind Driveways to maximum 50mm thickness, including disposal	Square Metre	150		
	1.5.1	Cold Milling - Taper Grind Roadway to maximum 50mm thickness, including disposal	Square Metre	100		
32 11 23		Granular Base				
	1.4.5	Gravel Shoulder	Tonne	80		
32 12 13.1		Asphalt Tack Coat				
	1.5.1	Asphalt Tack Coat	Square Metre	5330		
32 12 16		Hot-Mix Asphalt Concrete Paving				
	1.5.3	Asphalt Pavement Base Pave Low Areas- Upper Course #2	Tonne	15		
	1.5.1, 1.5.2	Asphalt Pavement Overlay - Upper Course # 2 - Local Road - Minimum 50mm Thick	Tonne	680		
	1.5.3	Asphalt Driveway on Gravel 50 mm thickness - Upper Course #2	Square Metre	10		
	1.5.3	Asphalt Driveway Overlay 50 mm thickness - Upper Course #2	Square Metre	150		
32 17 23		Painted Pavement Markings				
	1.5.1	Taped Temporary Pavement Markings to be included under 32 12 16 and 32 13 13	Incidental	-	-	-
	1.5.2	Restore Permanent Painted Pavement Markings	Lump Sum	1		
SUNDANCE DRIVE AND PEARS ROAD TOTAL (transfer to Summary Sheet)						

PROJECT AREA

GLEN FOREST WAY

DIV 01 GENERAL REQUIREMENTS						
MMCD Section	Para	Specification Title	Unit	Quantity	Unit Price	Amount
01 55 00		Traffic Control, Vehicle Access and Parking				
	1.5.1	Traffic Control, Vehicle Access and Parking	Incidental	-	-	-
01 57 01		Environmental Protection				
	1.6.1	Environmental Protection	Incidental	-	-	-
DIV 31 EARTHWORKS						
MMCD Section	Para	Specification Title	Unit	Quantity	Unit Price	Amount
31 22 16		Reshaping Granular Roadbeds				
	1.4.1	Reshaping Granular Roadbeds	Square Metre	1005		
DIV 32 ROADS AND SITE IMPROVMENTS						
MMCD Section	Para	Specification Title	Unit	Quantity	Unit Price	Amount
32 01 11		Pavement Surface Cleaning and Remove Pavement Marking				
	1.2.1	Pavement Cleaning	Incidental	-	-	-
32 01 16.8		Full Depth Reclamation				
	1.5.1	Full depth reclamation of asphalt to gravel.	Square Metre	910		
32 01 16.7		Cold Milling				
	1.5.1	Cold Milling - Taper Grind Driveways to maximum 50mm thickness, including disposal	Square Metre	180		
	1.5.1	Cold Milling to gravel base, including disposal	Square Metre	40		
32 11 23		Granular Base				
	1.4.2	Gravel Road Base up tp 150mm additional fronting 999 Glen Forest Way	Tonne	38		
	1.4.2	Gravel Road Base - 25mm thick place on reclamation area	Square Metre	910		
	1.4.5	50mm x 500mm wide Gravel Shoulder	Tonne	40		
32 12 13.1		Asphalt Tack Coat				
	1.5.1	Asphalt Tack Coat	Square Metre	1580		
32 12 16		Hot-Mix Asphalt Concrete Paving				
	1.5.1, 1.5.2	Asphalt Pavement Overlay - Upper Course # 2 - Local Road - Minimum 50mm Thick	Tonne	182		
	1.5.1, 1.5.2	Asphalt Pavement on Reclaimed Gravels- Upper Course # 2 - Local Road - Minimum 50mm Thick	Tonne	120		
	1.5.3	Asphalt Driveway on Gravel 50 mm thickness - Upper Course #2	Square Metre	180		
	1.5.3	Asphalt Pavement Base Pave - Upper Course #2 - Local Road 50 mm thickness - Upper Course #2	Square Metre	40		
GLEN FOREST WAY TOTAL (transfer to Summary Sheet)						

PROJECT AREA

ROCKY GLEN ROAD

DIV 01 GENERAL REQUIREMENTS						
<i>MMCD Section</i>	<i>Para</i>	<i>Specification Title</i>	<i>Unit</i>	<i>Quantity</i>	<i>Unit Price</i>	<i>Amount</i>
01 55 00		Traffic Control, Vehicle Access and Parking				
	1.5.1	Traffic Control, Vehicle Access and Parking	Incidental	-	-	-
01 57 01		Environmental Protection				
	1.6.1	Environmental Protection	Incidental	-	-	-
DIV 31 EARTHWORKS						
<i>MMCD Section</i>	<i>Para</i>	<i>Specification Title</i>	<i>Unit</i>	<i>Quantity</i>	<i>Unit Price</i>	<i>Amount</i>
31 22 16		Reshaping Granular Roadbeds				
	1.4.1	Reshaping Granular Roadbeds	Square Metre	830		
DIV 32 ROADS AND SITE IMPROVMENTS						
<i>MMCD Section</i>	<i>Para</i>	<i>Specification Title</i>	<i>Unit</i>	<i>Quantity</i>	<i>Unit Price</i>	<i>Amount</i>
32 01 11		Pavement Surface Cleaning and Remove Pavement Marking				
	1.2	Pavement Cleaning	Incidental	-	-	-
32 01 16.7		Cold Mill				
	1.5.1	Cold Milling - Taper Grind Driveways to maximum 50mm thickness, including disposal	Square Metre	30		
	1.5.1	Cold Milling - Taper Grind Roadway to maximum 50mm thickness, including disposal	Square Metre	30		
32 01 16.8		Full Depth Reclamation				
	1.5.1	Full depth reclamation of asphalt to gravel.	Square Metre	830		
32 11 23		Granular Base				
	1.4.2	Gravel Road Base - 25mm thick place on reclamation area	Square Metre	830		
	1.4.5	50mm x 500mm wide Gravel Shoulder	Tonne	50		
32 12 13.1		Asphalt Tack Coat				
	1.5.1	Asphalt Tack Coat	Square Metre	240		
32 12 16		Hot-Mix Asphalt Concrete Paving				
	1.5.1, 1.5.2	Asphalt Pavement Overlay - Upper Course # 2 - Local Road - Minimum 50mm Thick	Tonne	27		
	1.5.1, 1.5.2	Asphalt Pavement on Reclaimed Gravels- Upper Course # 2 - Local Road - Minimum 50mm Thick	Tonne	108		
	1.5.3	Asphalt Driveway on Gravel 50 mm thickness - Upper Course #2	Square Metre	30		
ROCKY GLEN ROAD TOTAL (transfer to Summary Sheet)						

**Modifications and Additions to the Master
Municipal Construction Documents**

The following list of MMCD Supplementary Specifications and requirements are supplemental to the “Master Municipal Construction Documents – General Conditions, Specifications and Standard Detail Drawings”:

In cases of conflict the order of precedence for specifications and standards is:

- Supplementary Specifications
- Drawings
- MMCD Specifications

In cases of conflict the order of precedence for measurement and payment clauses is:

Supplementary Specifications			
Section	Sub Para	Specification Title	Supplementary Specifications
1.32 11 23		Granular Base	
	1.4.5	Measurement and Payment	Payment for Shouldering will be at the Unit Price bid per square meter specified in the Schedule of Quantities. The Unit Price shall be full compensation for supplying, hauling, placing, moisture adjustment, and compaction of the aggregate to the required grades and crossfall. Shoulder to be 500mm wide at 50mm thick of 19mm minus road base, compacted to a minimum 95% standard proctor, and placed on a gravel base prepared by Public Works.



Legend

- 50mm Asphalt Overlay
Area = 5100 m2
- 50mm Driveway Taper
Grind & Overlay Pave
Area = 150 m2
- 50mm Road Taper Grind
Area = 100 m2
- 50mm Driveway Pave 50mm
Area = 10 m2
- Base Pave Low Areas
Area = 100 m2

1:2,000

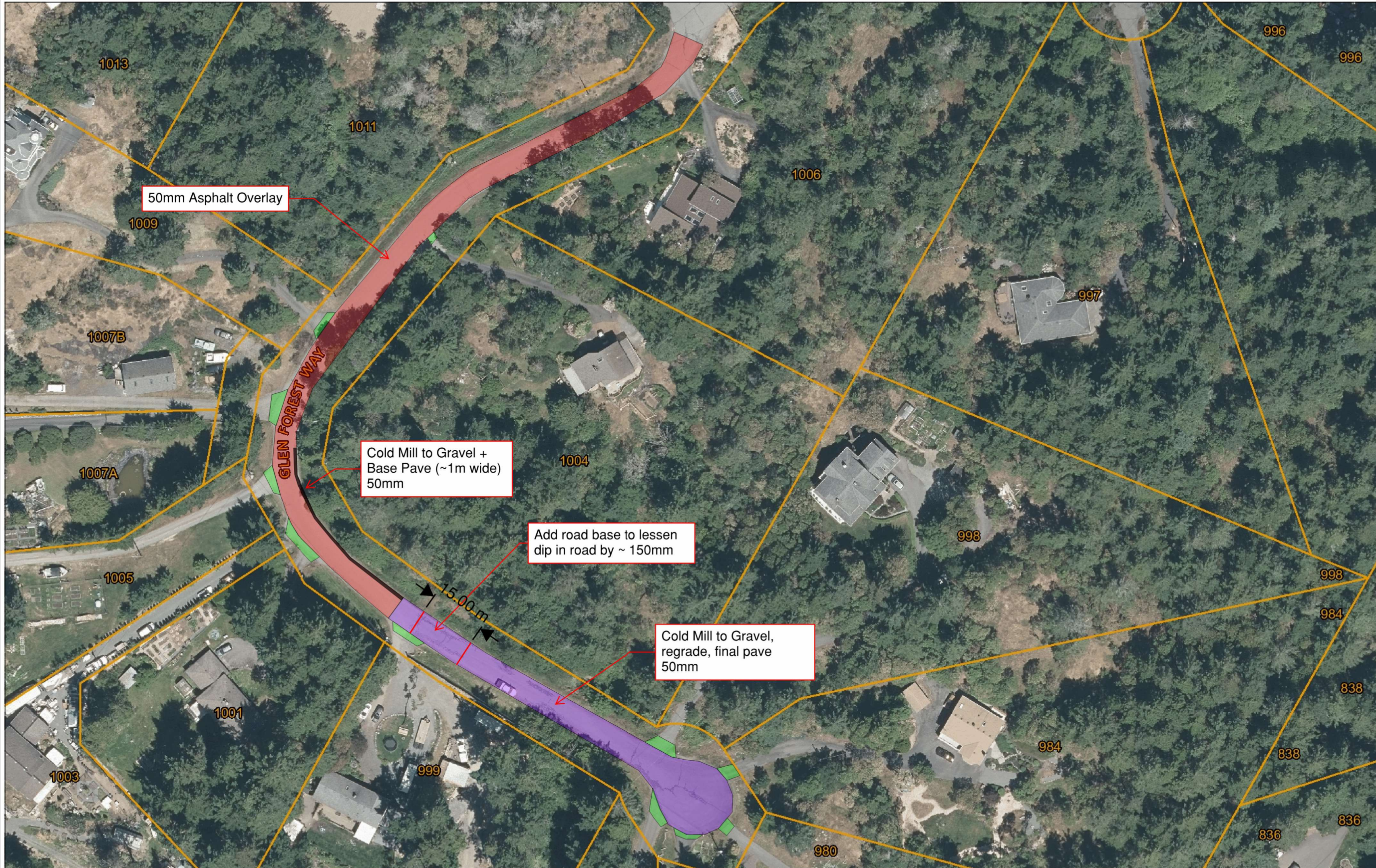


101.6 0 50.80 101.6 Meters

Important: This map is for general information purposes only. The Capital Regional District (CRD) makes no representations or warranties regarding the accuracy or completeness of this map or the suitability of the map for any purpose. This map is not for navigation. The CRD will not be liable for any damage, loss or injury resulting from the use of the map or information on the map and the map may be changed by the CRD at any time.

Notes

Figure 2
Sundance / Pears Scope of Work



Legend

- 50mm Asphalt Overlay
Area = 1400 m²
- 50mm Driveway Taper
Grind & Overlay
Area = 180 m²
- Grind to Gravel + Base
Pave 50mm
Area = 40 m²
- Full Depth Reclamation, add
25mm of 19mm road base,
regrade and compact,
Pave 50mm.
Area = 910 m²

1: 1,000



50.8 0 25.40 50.8 Meters

Important: This map is for general information purposes only. The Capital Regional District (CRD) makes no representations or warranties regarding the accuracy or completeness of this map or the suitability of the map for any purpose. This map is not for navigation. The CRD will not be liable for any damage, loss or injury resulting from the use of the map or information on the map and the map may be changed by the CRD at any time.

Notes

Figure 3
Glen Forest Scope of Work



Legend

-  50mm Asphalt Overlay
Area = 180 m²
-  50mm Taper
Grind & Overlay.
Area = 30 m²
-  Full Depth Reclamation, add
25mm of 19mm road base,
regrade and compact,
Pave 50mm.
Area = 830 m²
-  50mm Road Taper Grind
Area = 30 m²

1: 1,000



50.8 0 25.4 50.8 Meters

NAD_1983_UTM_Zone_10N
© Capital Regional District

Important: This map is for general information purposes only. The Capital Regional District (CRD) makes no representations or warranties regarding the accuracy or completeness of this map or the suitability of the map for any purpose. This map is not for navigation. The CRD will not be liable for any damage, loss or injury resulting from the use of the map or information on the map and the map may be changed by the CRD at any time.

Notes

Figure 4
Rocky Glen Rd Scope of Work



Legend

- 50mm Asphalt Overlay
Area = 2726m²
- 50mm Driveway Taper
Grind & Overlay
Area = 150m²
- Taper Grind
Area = 120m²
- Culvert Repair 50mm Base
Pave on Gravel
Area = 15 m²
- Driveway Pave 50mm
on Gravel
Area = 60 m²

1: 1,500



76.2 0 38.10 76.2 Meters

Important: This map is for general information purposes only. The Capital Regional District (CRD) makes no representations or warranties regarding the accuracy or completeness of this map or the suitability of the map for any purpose. This map is not for navigation. The CRD will not be liable for any damage, loss or injury resulting from the use of the map or information on the map and the map may be changed by the CRD at any time.

Notes

Figure 1
Tiswilde Scope of Work